



Wellborn Cabinet, Inc. meets the increasing demand for accessible living and aging-in-place environments in today's homes with The Active Living Collection. The Active Living Collection is available in Home Concepts, Select, Premier brands and the Estate Collection.

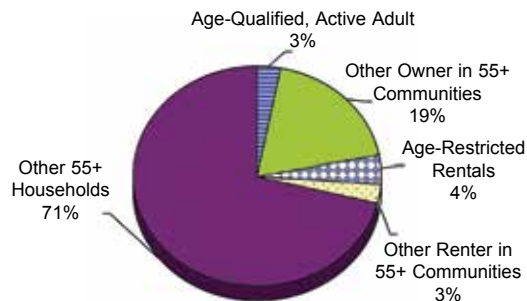
**WELLBORN**  
CABINET, INC.®

One of the fastest growing opportunities in the remodeling industry is the aging-in-place market. The aging-in-place market consists of people who want to remain in their home safely, independently and comfortably, regardless of age, income or ability level.

People are living longer and leading more active lives and with their changing lifestyles, they are looking to revitalize their home through remodeling in order to fit their needs. Identifying these opportunities and developing the skills needed to interact with these customers can help you grow your business dramatically.

### *Did you know that:*

- 49.7 million disabled people in the U.S. spend 40 billion dollars on accessible products
- 21.5 million of these are working age individuals
- The population over 50 years of age amounts to an \$800 billion market
- This group controls 56% of all discretionary income
- They own 50% of all homes
- Over two thirds of 55+ households own single-family detached homes
- Nine out of 10 people age 70 and over live in conventional housing



One of the ways you can develop the skills needed to interact with this growing market is by becoming a CAPS Specialist. NAHB developed CAPS to provide comprehensive, practical information about working with maturing adults to remodel their homes for aging-in-place.

#### *As a graduate of this course, you will be able to:*

- Explain the three segments within the aging-in-place market that present business opportunities for building professionals.
- Implement a process for promoting new opportunities for products and services in the aging-in-place market.
- Enhance your sales process with effective techniques for the aging-in-place market.

The website for CAPS is <http://www.nahb.org/page.aspx/category/sectionID=686>.

The contact information for NAHB is National Association of Home Builders, 1201 15th Street NW, Washington, DC 20005. The phone numbers are 202-266-8200 or 800-368-5242 and the fax number is 202-266-8400.



Wellborn Cabinet, Inc. also has tools to help you grow your business. A segment on Active Living has been added to New Dealer Orientation, Authorized Remodeler and Sales & Design classes at Wellborn Academy. Also watch Wellborn's newsletters for information on Active Living webinars. Plus a Power Point training presentation is available on WAY at

[http://mes1.wellborn.com/cms/images/stories/users/lcharacter/Independent\\_Living.ppt](http://mes1.wellborn.com/cms/images/stories/users/lcharacter/Independent_Living.ppt)

Other helpful websites are:

- [www.abledata.com](http://www.abledata.com) 
- [www.aarp.com](http://www.aarp.com) 
- [www.easylivingprogram.com](http://www.easylivingprogram.com)
- [www.ada.gov](http://www.ada.gov) 
- [www.naipc.com](http://www.naipc.com) 
- [www.seniorhousingnet.com](http://www.seniorhousingnet.com) 

## Active Living - Design Basics

Universal Design in interiors is aimed to be usable by all people without a need to adapt for a specialized reason. Safety for the client is the primary goal. Consider fire exits, falls, burns, redundancies, communication and security systems.

# Home Accessibility Checklist

### General Tips

---

#### Doors

- Do all the doors have 36" openings?
- Is there 18" maneuvering space on the latch side of the door?
- Are the thresholds less than 1/2" high?
- Are there lever handles instead of knobs?
- Is it hard to open the door?



#### Walkways

- Is there a second handrail for stairs?
- Are there extra grab bars where a fall might occur?
- Are the walkways at least 36" wide?
- When there is a perpendicular turn is one walkway at least 42" wide?



## *General Tips* (continued)

---

### **Finishes**

- Is there use of contrasting color to symbolize change of environment?
- Does the surface reduce/prevent glare?

### **Flooring**

- Is the flooring non-slip?
- Is the flooring seamless?
- Is it easy to clean?
- Are there any tripping hazards such as a throw rug?
- Is the carpet low pile with a firm padding?

### **Lighting**

- Are critical areas of the home well lit?
- Are there lights in the base cabinetry?
- Are there night lights?
- Are there rocker switches, dimmers or motion sensors for the switching?
- Are the switches mounted at 48" AFF?
- Are the outlets mounted at least 18" AFF?
- Can the client see out the window from a seated position?
- Can client lock and unlock the window?
- Would the client be able to use the window in case of emergency?

### **HVAC**

- Are the controls easy to read, access and understand?
- Are the controls mounted at 48" AFF?
- Are the filters easy to access and maintain?

## *Kitchen*

---

### **Walkways**

- Are the aisles at least 42" wide?
- Is there a 60" turning radius in the kitchen?

### **Base Cabinets**

- Are the cabinets 28"- 45" high?
- Do all the drawers have full extension glides?
- Does at least one corner cabinet have functional storage device?
- Are there lifts and pullout shelves to make storage accessible?

### **Wall Cabinets**

- Are the wall cabinets hung 15" above the base cabinet?
- Are there adjustable cabinets and lifts?
- Are there pullout shelves in cabinets deeper than 12"?

### **Cabinetry Hardware**

- Are there "D" rings, large pulls or magnetic latches to open cabinetry?

### **Countertops**

- Is the countertop made of low glare materials?
- Is there a contrasting edge to help in item placement?
- Are there cove splashes?
- Is there contrasting color with height changes?



## *Kitchen* (continued)

### Sink

- Is the knee space 24" high, 30" wide and 19" deep?
- Is the sink 6" shallow?
- Are the pipes insulated or have an apron?
- Is the sink's drain positioned in the rear?
- Is it an under mount sink?
- Does the faucet have anti-scald features?
- Is the faucet a loop or a single lever?



### Appliances

- Is there a 48" x 30" space in front of each appliance?

### Refrigerator

- Does it have 24" of landing space on each side?
- Does it have sliding or pull out shelves?
- Does it have more door storage?
- Are the controls easy to access?

### Oven

- Is it installed 15" - 54" AFF?
- Is it accessible on each side?
- Is it self cleaning?
- Does it have a 15" landing space above or beside it?



### Range

- Does it have front position controls?
- Does it have staggered burners?
- Is it accessible on each side?
- Does it have a 15" landing space on one side and 12" on the other?

### Cooktop

- Does it have front position controls?
- Does it have staggered burners?
- Does it have a 15" landing space on one side and 12" on the other?

### Microwave

- Is it installed 15" - 54" AFF with controls to or below 48"?
- Are the doors hinged, hatched or a reversible swing?
- Is there a 15" landing space above, below or beside the handle?

### Small Appliances

- Are small appliances, such as a mixer, placed on a pullout or lift shelf?



## *Bathroom*

---

### **Walkways**

- Is there a 60" turning radius in bathroom?

### **Lavatory**

- Are the lavatories any higher than 34"?
- Is there 29" of knee clearance?
- Is there a 48" x 30" of clear floor space in front of the lavatory?
- Are there anti-scald features on the faucet?



### **Shower/Tub**

- Are there grab bars in shower?
- Are there anti-scald features on the faucet?
- Are there gated tubs or roll in showers?

### **Toilet**

- Are there grab bars around toilet?
- Is there 48" x 56" of clear space around toilet with toilet 18" centerline with a side wall?
- Is the toilet seat height taller than 14"?



### **Flooring**

- Is the flooring non-slip?
- Is the floor made of a low glare material?

### **Ventilation**

- Do the exhaust fans run on timers?

### **Miscellaneous**

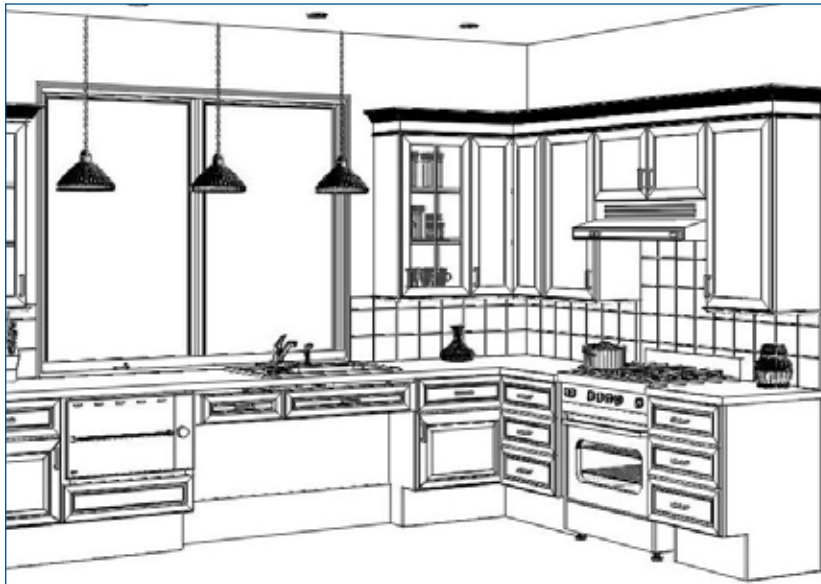
- Are towel bars hung for the clients reach? (between 36" to 48")



**WELLBORN**  
CABINET, INC.®

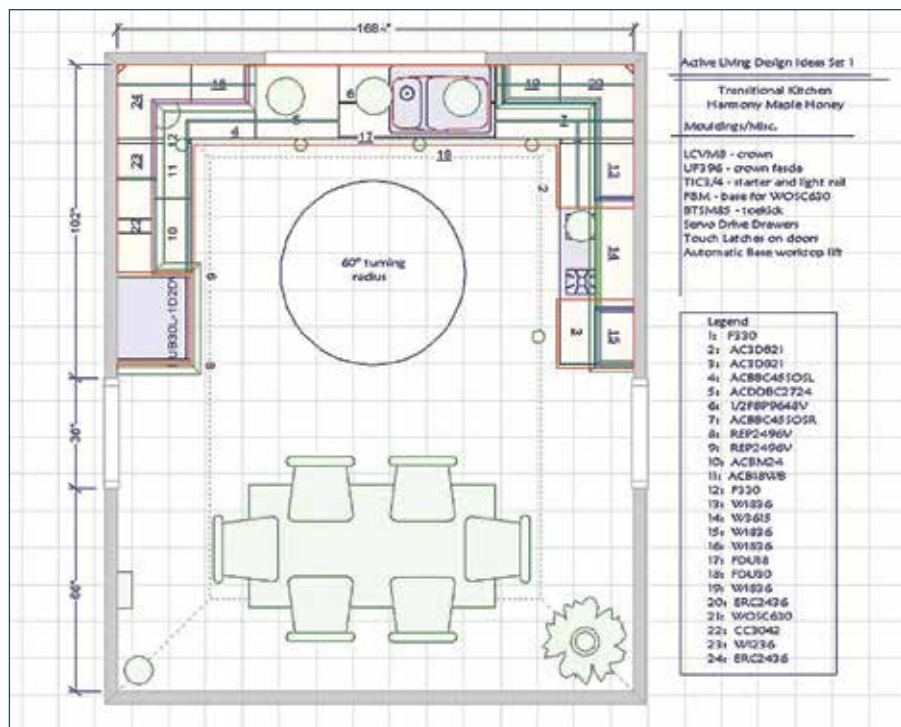
## Design Ideas

### Set 1



Click  
Image To  
View Full  
Size

Click  
Image To  
View Full  
Size

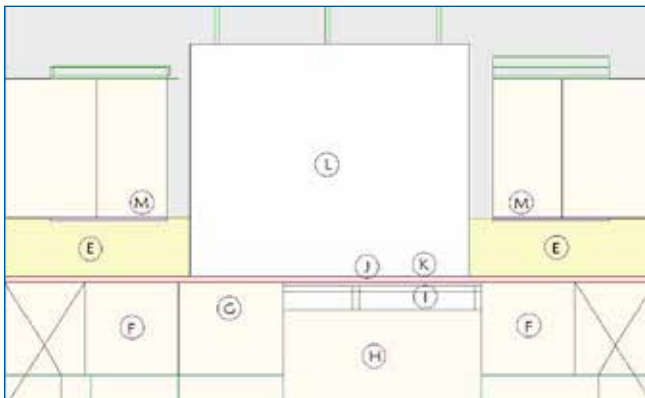
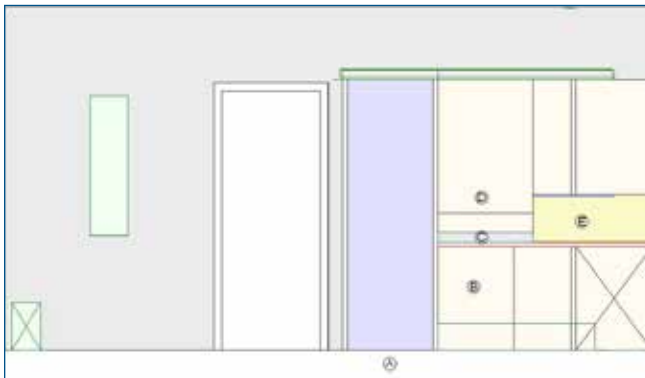




## Design Ideas

### Set 1

Click Images To View Full Size



### Active Living Design Tips– Set 1

- A) – 48" x 30" Space in front of appliance
- B) – Microwave controls below 48" A.F.F.
- C) – 15" Landing space on handle side of refrigerator
- D) – Storage of frequently used items 15" to 48" A.F.F.
- E) – Wall cabinets mounted 15" above the countertop
- F) – Corner base includes a functional storage device
- G) – Dishwasher accessible on each side with a minimum of 21" standing room between DW and adjacent counter
- H) – Knee space minimum 30"w x 24"h x 19" deep
- I) – Counter on mechanical lift for adjustable height
- J) – Under mount sink with shallow bowl 5/8" deep
- K) – Faucet has single lever making it easy to use
- L) – Window provides visibility from a seated position
- M) – Touch latches on cabinet doors make them easy to open
- N) – Range has front position controls and is accessible on each side
- O) – Range has self cleaning oven
- P) – Range has 15" & 12" of landing area on each side
- Q) – Base cabinets are 32½" tall with 8" toe kick
- R) – Under cabinet lighting provides additional lighting for critical task areas
- S) – 36" Door openings
- T) – Light switches positioned at 48" A.F.F.
- U) – Vinyl flooring used – easily cleaned and maneuvered





**WELLBORN**  
CABINET, INC.®

## Design Ideas

### Set 1

### Active Living Kitchen Ideas Set 1 Décor Specifications

#### Appliances & Plumbing

Refrigerator – Subzero  
Left hand door swing, 27” width,  
stainless steel  
Model #700TCI

Range – GE  
30” Range, stainless steel  
Model # JGSP28SENSS

Hood – GE  
Wall mount, stainless steel, 36” width  
Model # JV566HSS

Microwave – SHARP  
Stainless steel, 24” width, push button to  
open and close with one finger  
Model # KB-6524PS

Dishwasher Drawer – Kenmore  
Stainless steel, big “D” shape handle  
Model #13323

Sink – Kohler  
Under counter mount, double high-low  
compartment, 33” L x 22” W  
Model # K-3352-L

Faucet – Kohler  
Simplice pull down faucet single lever  
control, Vibrant Stainless  
Model # K-647

#### Lighting

Wellborn  
Puck Light - Low Voltage Lighting Kit  
Model # LKCH

#### Lighting(continued)

Lowe’s  
Switch – Lutron – Lumea  
Item # 239660 –  
Model # LG-600PHW-BLSS

#### Flooring

Lumber Liquidators  
Resilient, moisture resistant,  
easily maneuvered  
Tranquility 2mm Charleston Chestnut  
Model# 2CC

#### Paint

Coronado Paints  
Quiet Cove 8338, Air Care Odorless Acrylic  
Eggshell Finish

#### Hardware

Granberg  
Worktop lift for 48” base  
Blum  
Servo Drive Drawer Openers  
Belwith Products  
P3233-CH Bridges Pull Chrome

#### Countertop

Caeserstone  
Oyster, Model # 9601, Honed finish  
Edge Profile: Ogee Bullnose

#### Backsplash

Dal Tile  
Shadow Dolce Listello GT85 – Field Tile  
Shadow Oasis Listello GT82 – Accent Tile



**WELLBORN**  
CABINET, INC.®

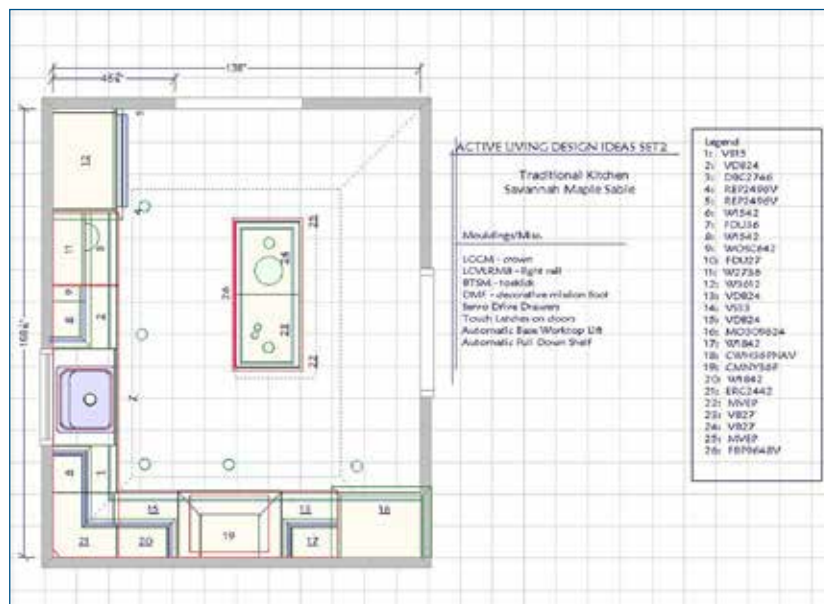
## Design Ideas

### Set 2



Click  
Image To  
View Full  
Size

Click  
Image To  
View Full  
Size



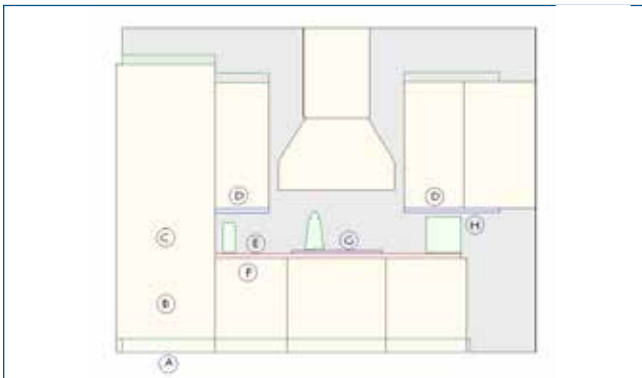


## Design Ideas

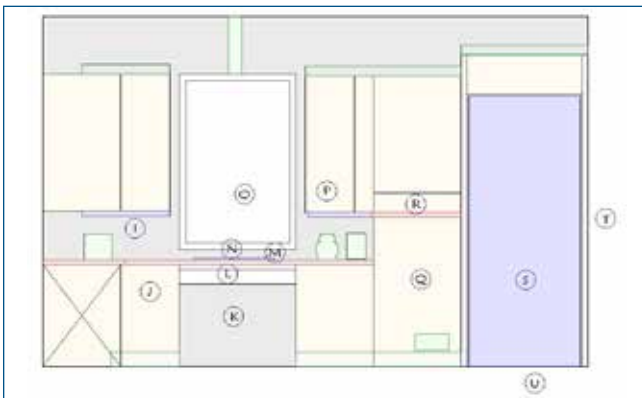
### Set 2

Click Images To View Full Size

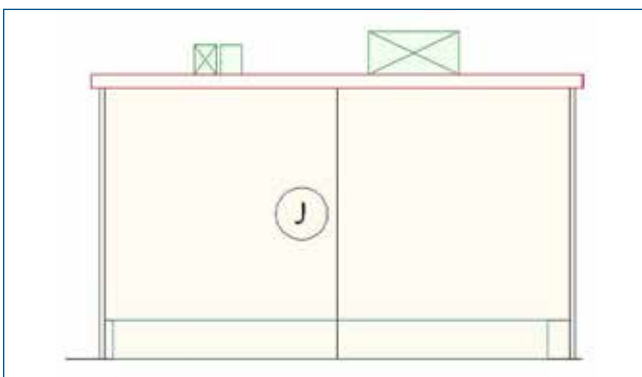
### Active Living Design Tips– Set 2



- A) – 48" x 30" Space in front of appliance
- B) – Microwave drawer controls below 48" A.F.F.
- C) – Oven installed minimum of 31" A.F.F. and is self cleaning
- D) – Automatic wall cabinet pull down shelf
- E) – Cooktop has 15" & 12" of landing area on each side – also provides 15" landing area beside ovens
- F) – Drawers are equipped with Servo drive so they open with a touch of the hand
- G) – 30" Induction hybrid cooktop with front controls for safety



- H) – Under cabinet lighting provides additional lighting for critical task areas
- I) – Wall cabinets mounted 15" above the countertop
- J) – Base cabinets are 32½" tall
- K) – Knee space minimum 30"w x 24"h x 19" deep
- L) – Counter on mechanical lift for adjustable height
- M) – Under mount sink with shallow bowl 5⅝" deep
- N) – Faucet has single lever making it easy to use
- O) – Window provides visibility from a seated position



- P) – Touch latches on cabinet doors make them easy to open
- Q) – Raised dishwasher accessible on each side with landing space to left
- R) – 15" Landing space on handle side of refrigerator
- S) – Frequently used items stored between 15" & 48" A.F.F.
- T) – Light switches positioned at 48" A.F.F.
- U) – Vinyl flooring used – easily cleaned and maneuvered



**WELLBORN**  
CABINET, INC.®

## Design Ideas

### Set 2

### Active Living Kitchen Ideas Set 2 Décor Specifications

#### Appliances & Plumbing

- Refrigerator – Electrolux  
Bottom freezer, french door swing,  
stainless steel  
Model # EW23BC70IS
- Cooktop – Electrolux  
30" Cook top induction hybrid, stainless steel  
Model # EW30CC55GS
- Oven – Electrolux  
30" Oven, stainless steel with glide  
out shelves  
Model# EW30EW55GS
- Microwave – Electrolux  
Stainless steel, 30" width, drop down door  
with handle  
Model # EW30MO55HS
- Hood – Wellborn Cabinet, Inc.  
Wall mount, Wood Hood with Chimney
- Dishwasher – Electrolux  
Integrated  
Model # EIDW6405GT
- Sink – Elkay  
Under counter mount, stainless steel,  
5 $\frac{3}{8}$ " bowl depth  
Model # ELUHAD2115
- Faucet – American Standard  
Pekoe pull-down kitchen faucet,  
stainless steel  
Model # 4332.300

#### Lighting

- Wellborn  
Puck Light - Low Voltage Lighting Kit  
Model # LKCH

#### Lighting (continued)

- Lowe's  
Switch – Lutron – Lumea  
Item # 239660 –  
Model # LG-600PHW-BLSS

#### Flooring

- Lumber Liquidators  
Resilient, moisture resistant, easily  
maneuvered  
Tranquility 1.5mm South Perry Pine  
Model # 15SP

#### Paint

- Benjamin Moore  
Straw 2154-50 Natura Eggshell 513

#### Hardware

- Granberg  
Worktop lift for 36" base  
Automatic pull down shelf for 18"  
wall cabinets  
Automatic base appliance lift 24"

#### Blum

- Servo Drive Drawer Openers

#### Belwith Products

- M508 Ribbon & Reed Pull Antique  
Pewter finish

#### Countertop

- Dex Studios Concrete  
River Pearl Model # T49, Honed finish  
Edge Profile: Waterfall Bullnose

#### Backsplash

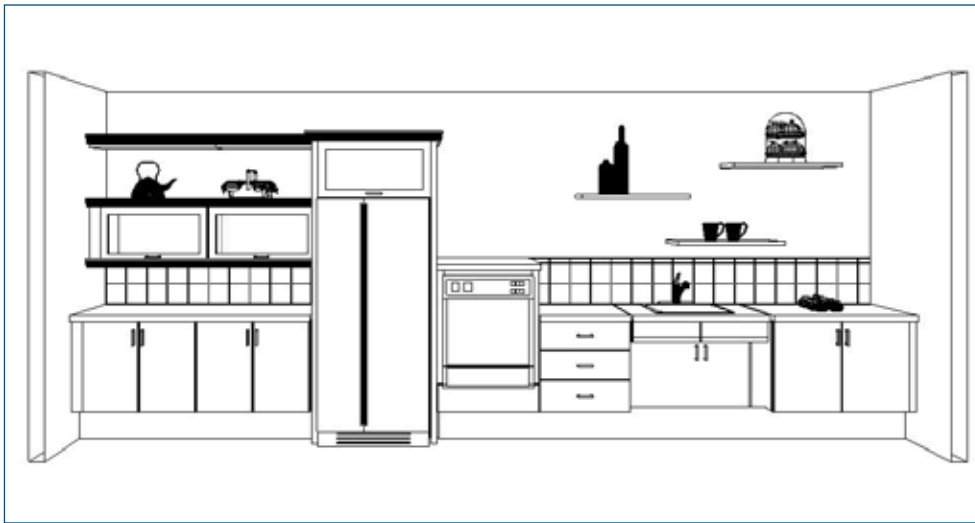
- Dal Tile  
AT04 Irish Cream 6x6 – Field Tile  
AT08 Winter Storm 6x6 – Accent Tile  
Scroll Accent Strip Winter Storm – Trim Tile



**WELLBORN**  
CABINET, INC.®

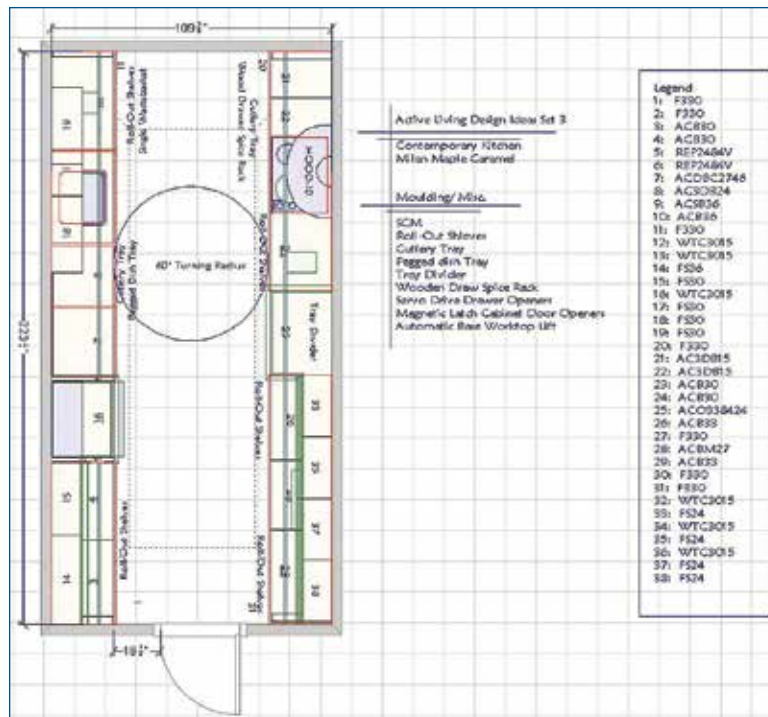
## Design Ideas

### Set 3



Click  
Image To  
View Full  
Size

Click  
Image To  
View Full  
Size

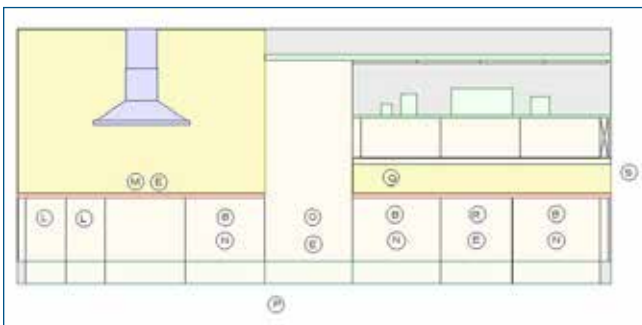
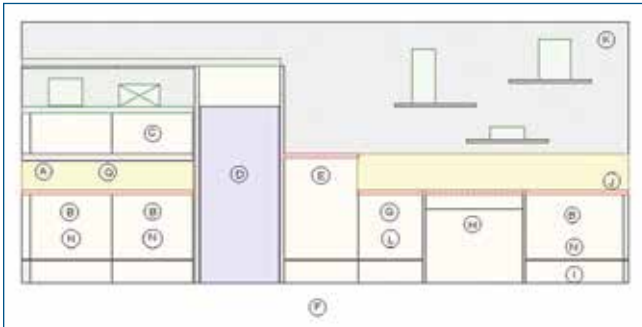




## Design Ideas

### Set 3

Click Images To View Full Size



### Active Living Design Tips– Set 3

- A) – Paddle dimmer switches for light control and ease of use
- B) – Roll-out shelves for base cabinets
- C) – Shelving under 12" does not need pull accessories
- D) – Open space of 2' beside refrigerator
- E) – Controls on front for easy access
- F) – Low glare cork floor
- G) – Cutlery and plate organizer in convenient height and location
- H) – Roll under sink with lift for adjustable height
- I) – 8" Toe kick
- J) – Contrasting countertop with walls and cabinets and low sheen countertops
- K) – Low sheen satin finish paint
- L) – Push to open drawers
- M) – Staggered burners on cook top to prevent burning
- N) – Push to open cabinets, magnetic touch latches
- O) – Easy access on both sides of oven
- P) – 60° Turning radius
- Q) – 15" Distance between wall cabinet and base cabinet
- R) – Microwave at height for wheel chair access
- S) – Open space of 18" beside entry



**WELLBORN**  
CABINET, INC.®

## Design Ideas

### Set 3

### Active Living Kitchen Ideas Set 3 Décor Specifications

#### Appliances

- Refrigerator – Kitchen Aid  
Left hand door swing, 30” width,  
stainless steel  
Model # KBLS19KTSS
- Oven – Kitchen Aid  
Model # KEBU107SSS
- Cook top – Kitchen Aid  
Single oven, 30” width, large digital  
display  
Model # KICU508SBL
- Hood – Kitchen Aid  
Wall mount, stainless steel, 48” width  
Model # KWCU380JSS
- Microwave – Kitchen Aid  
Stainless steel, 24” width, push button to  
open, side controls  
Model # KCMS2055SSS
- Dishwasher – Kitchen Aid  
Stainless steel, front controls, big “D”  
shape handle  
Model # KUDE70CVSS
- Sink – Kohler  
Under counter mount, double high-low  
compartment, 33” L x 22” W  
Model # K-6495-1U
- Faucet – Kohler  
Single lever control, stainless steel, with  
side spray  
Model # K-6336

#### Lighting

- Wellborn  
Puck Light - Low Voltage Lighting Kit  
Model # LKCH
- Lowe’s  
Switch – Lutron – Lumea  
Item # 239660 –  
Model # LG-600PHW-BLSS

#### Flooring

- Lumber Liquidators  
Low sheen, cushioned, durable,  
acoustical and a good insulator  
Lisbon Cork, Model # CKCLCT

#### Paint

- Benjamin Moore  
Colorado Gray 36-50, Satin Finish

#### Hardware

- Granberg  
Automatic base worktop lift 36”
- Blum  
Servo Drive Drawer Openers
- Hafele  
Magnetic touch latch

#### Countertop

- G & L Marble  
Crema Europa Slab, Model # 86217,  
Honed finish

#### Backsplash

- G & L Marble  
Giada Cream Opus with Oriental Brown,  
Honed finish





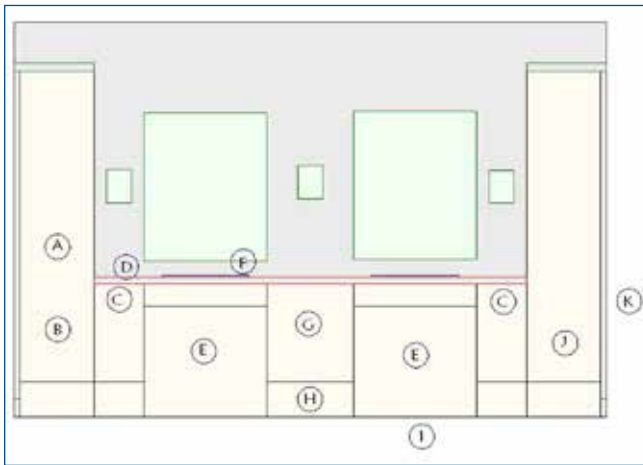


## Design Ideas

### Set 4

[Click Image To View Full Size](#)

### Active Living Design Tips– Set 4



- A) — Magnetic touch latches
- B) — Roll out shelves
- C) — Automatic opening drawers
- D) — Contrasting low glare countertop for visibility
- E) — Knee space in sinks minimum 30" W x 24" H x 19" deep
- F) — Lever handle for faucet
- G) — 32½" Cabinet height
- H) — 8" Toekick
- I) — Low glare, non-slip flooring
- J) — Roll out hamper
- K) — Paddle switch for ease of use

### General Tips for overall Bathrooms:

- 60" Turning radius in front of toilet area
- 48" x 56" Toilet space with centerline of toilet 18" from side wall
- 36" Opening for entries with 18" maneuvering space on latch side of entry door
- Use of lever handles on entry door for easier use
- Grab Bars in and around critical areas such as toilet and shower
- Roll in shower without level change and fold down seat
- Hand held shower system with built in grab bar and adjustable height slide
- Area well ventilated to maintain proper moisture levels
- Toilet seat height between 15" and 19" A.F.F.
- 48" Deep clear floor space at entry door



**WELLBORN**  
CABINET, INC.®

## Design Ideas

### Set 4

### Active Living Bathroom Ideas Set 4 Décor Specifications

#### Plumbing

Sink – Kohler  
Kelston under counter lavatory  
Model # K-2382-96

Faucet – Kohler  
V Georges Brass® widespread  
lavatory faucet  
Model # K-6813-4-SN

Shower Head – Kohler  
Rain showerhead with traditional design,  
brushed nickel  
Model # K-10122-BN  
Symbol multi-function hand shower  
Model # K-18495-BN  
Master shower slide bar kit  
Model # K-8516-BN

Shower Valves – Kohler  
Devonshire Volume Control Trim  
Model # K-T10358-4-BN  
Master Shower Thermostatic Valve  
Model # K-669-KS

Shower Drain – Kohler

Shower Glass – Custom safety glass– size to  
fit on-site

Toilet – Kohler  
Kelston™ Comfort Height® elongated  
toilet  
Model # K-11453-0

#### Lighting

Wall Sconce – Home Depot  
Lawford collection brushed nickel  
2-Light bracket  
Model # P3396-09

#### Flooring

Tile – G&L Marble  
Alabastrino Travertine Tile 18" x 8"

#### Countertop

Icestone  
Heirloom Gray, honed finish, 1¼"  
radius top edge

#### Wall Covering

Benjamin Moore  
Item # HC-114, Saybrook Sage

#### Grab Bars:

Mountain Plumbing  
Model # MT98TDGRS-32/BRN –  
32" Grab Bar – brushed nickel finish  
Model # MT98TDGRS-24/BRN –  
24" Grab Bar – brushed nickel finish

#### Hardware

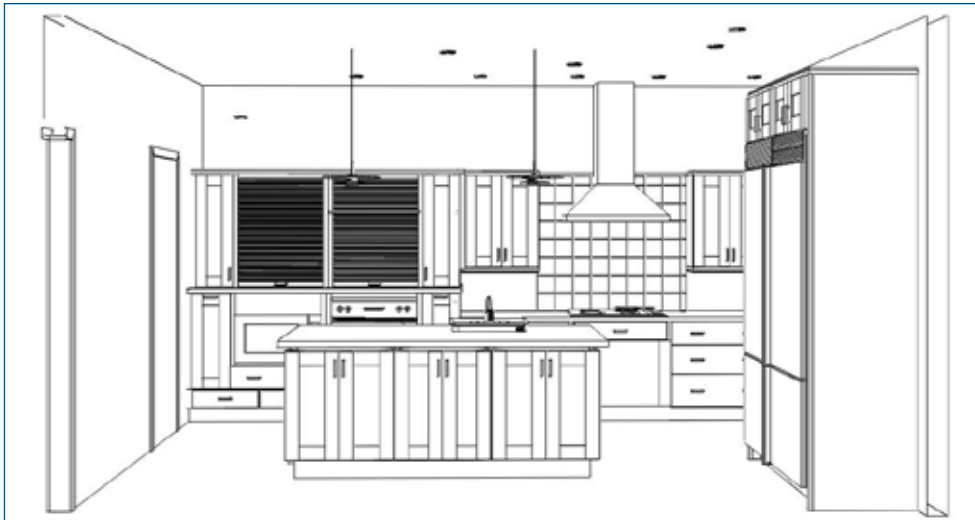
Blum  
Servo Drive Drawer Openers  
  
Hafele  
Magnetic touch latches for cabinet  
doors



**WELLBORN**  
CABINET, INC.®

## Design Ideas

### Set 5



Click  
Image To  
View Full  
Size

Click  
Image To  
View Full  
Size

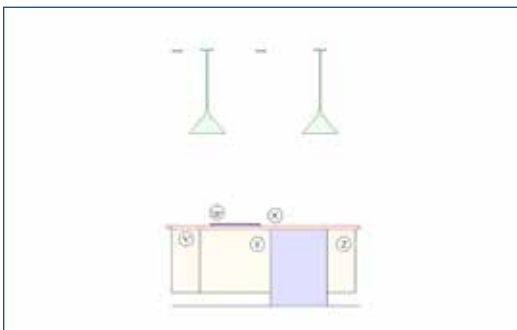
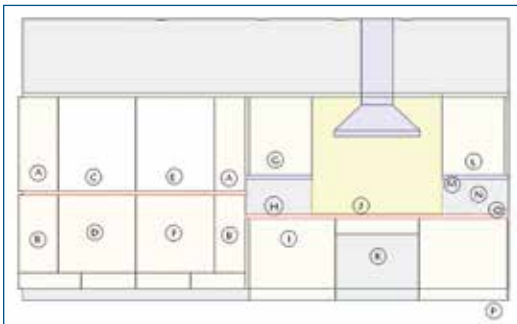




## Design Ideas

### Set 5

Click Images To View Full Size **Active Living Design Tips– Set 5**



- A) — Rotating shelf insert to make items more accessible
- B) — Pullouts to make items more accessible
- C) — Landing space for microwave
- D) — Microwave controls below 48" A.F.F.
- E) — Landing space for oven
- F) — Elevated self cleaning oven with access on both sides
- G) — Automatic wall cabinet lift to make items more accessible
- H) — Contrasting countertop with walls and cabinets and low sheen countertops
- I) — Drawers are equipped with Servo drive so they open with a touch of the hand
- J) — 30" Induction cooktop with front controls for safety
- K) — Knee space minimum 30"w x 24"h x 19" deep
- L) — Wall cabinet pull down shelf to make items more accessible
- M) — Under cabinet lighting provides additional lighting for critical task areas
- N) — Wall cabinets mounted 15" above the countertop
- O) — Cooktop has 15" & 12" of landing area on each side
- P) — Cork flooring used – easily cleaned and maneuvered
- Q) — Paddle dimmer switches for light control and ease of use
- R) — 36" Door openings
- S) — Low shine satin finish paint
- T) — Open space of 18" beside entry
- U) — Refrigerator with bottom mount freezer keeps frequently used items between 15" & 48" A.F.F.
- V) — Base cabinets are 32½" tall
- W) — Faucet has single lever making it easy to use
- X) — Dishwasher accessible on each side
- Y) — Under mount sink with shallow bowl 5½" deep
- Z) — Touch latches on cabinet doors make them easy to open
- AA) — Roll-out shelves for base cabinets to make items more accessible
- BB) — Small appliance base lift to make unit more accessible



**WELLBORN**  
CABINET, INC.®

## Design Ideas

### Set 5

## Active Living Kitchen Ideas Set 5 Décor Specifications

### Appliances & Plumbing

- Refrigerator – Electrolux  
Bottom freezer, french door swing,  
stainless steel  
Model # EW23BC70IS
- Cooktop – Electrolux  
30" Cook top induction, stainless steel  
Model # E30IC75FSS
- Oven – Electrolux  
30" oven, stainless steel with glide  
out shelves  
Model# EW30EW55GS
- Microwave – Electrolux  
Stainless steel, 30" width, drop down door  
with handle  
Model # EW30MO55HS
- Hood – Electrolux  
36" Stainless steel hood  
Model # E36WC75GSS
- Dishwasher – Electrolux  
Integrated  
Model # EIDW6405GT
- Sink – Elkay  
Under counter mount, stainless steel,  
5 3/8" bowl depth  
Model # ELUHAD2115
- Faucet – Kohler  
Karbon kitchen faucet, silver with  
stainless steel  
Model # K-6227-C11-VS

### Lighting

- Puck Light - Low Voltage Lighting Kit  
Model # LKCH

### Lighting (continued)

- Lowe's  
Switch – Lutron – Lumea  
Item # 239660 –  
Model # LG-600PHW-BLSS

### Flooring

- Lumber Liquidators  
Matisse Cork Flooring  
Sku: CKCLME

### Paint

- Coronado Paints  
7689 Spanish Moss Eggshell Finish

### Hardware

- Granberg  
Automatic lift for 24" wall cabinets  
Automatic lift for small appliances for 24"  
base cabinet

### Hafele

- Pull down shelves for 24" wall cabinet  
Revolving susan for 12" wall cabinets

### Blum

- Servo Drive Drawer Openers

### Countertop

- Dex Studios Concrete  
Red Heat Model # T1, Honed finish  
Edge Profile: Eased edge top and bottom

### Backsplash

- Dex Studios Concrete  
Red Heat Model # T1, Honed finish